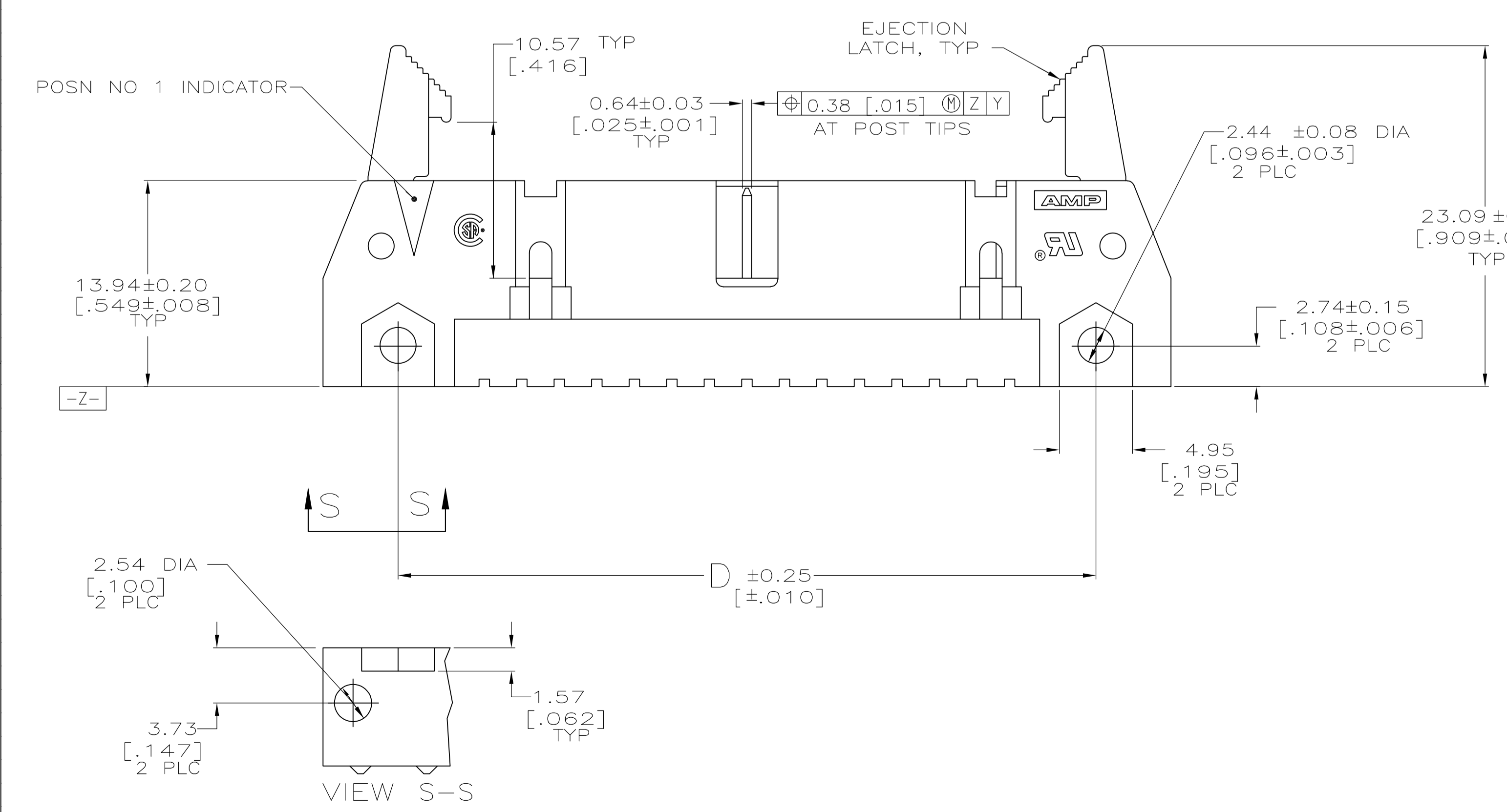
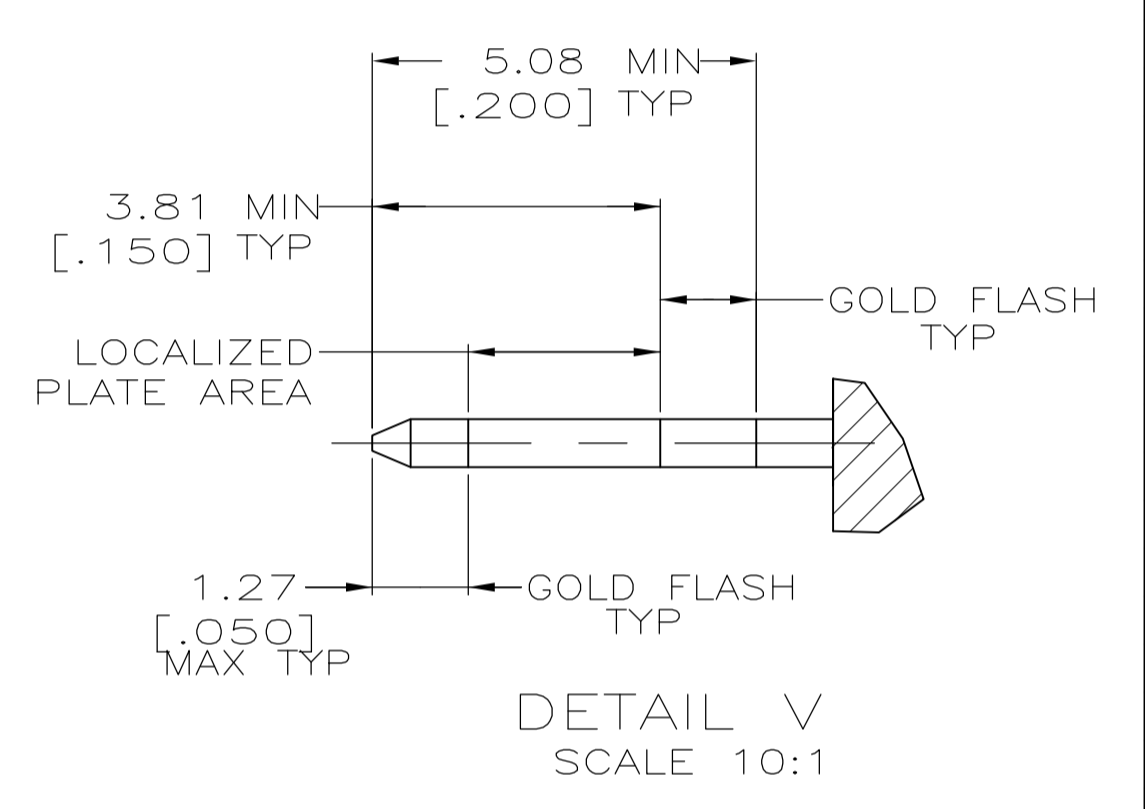
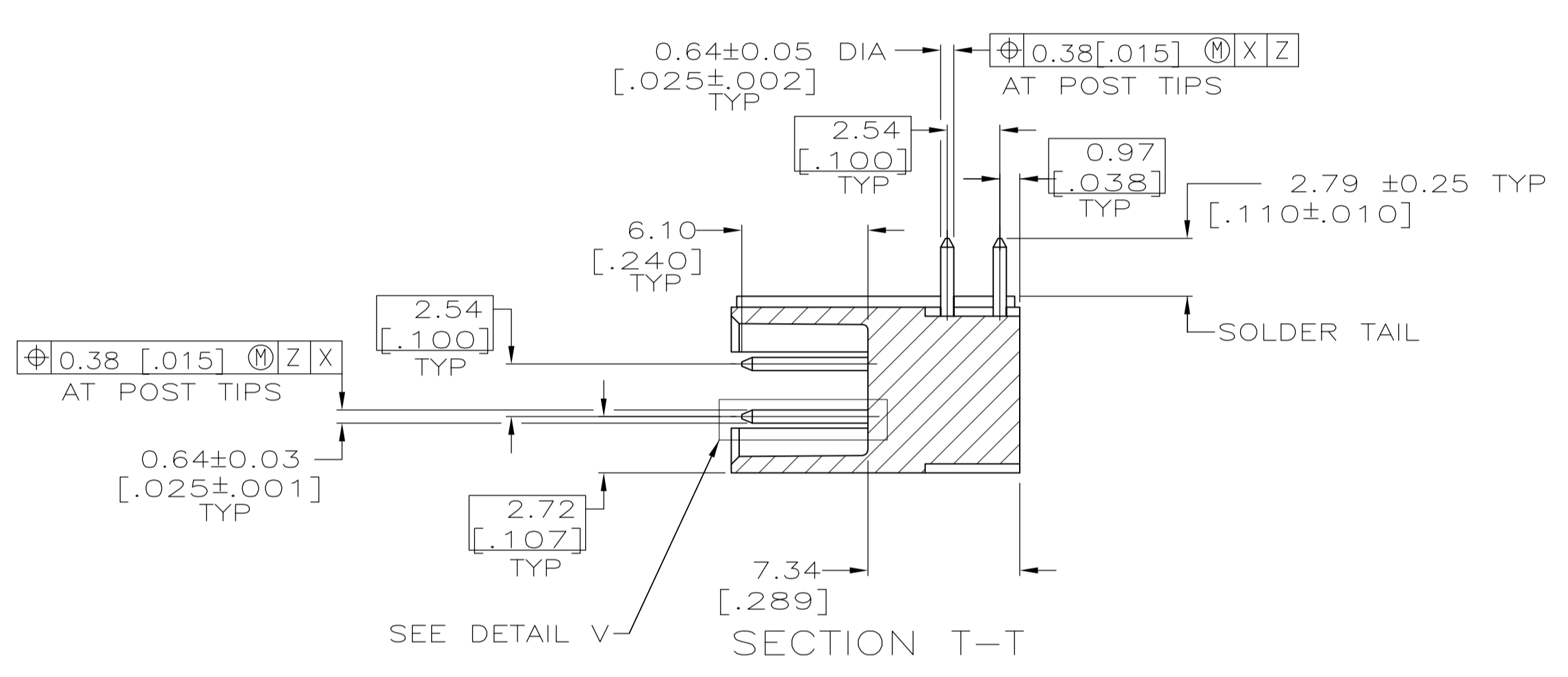
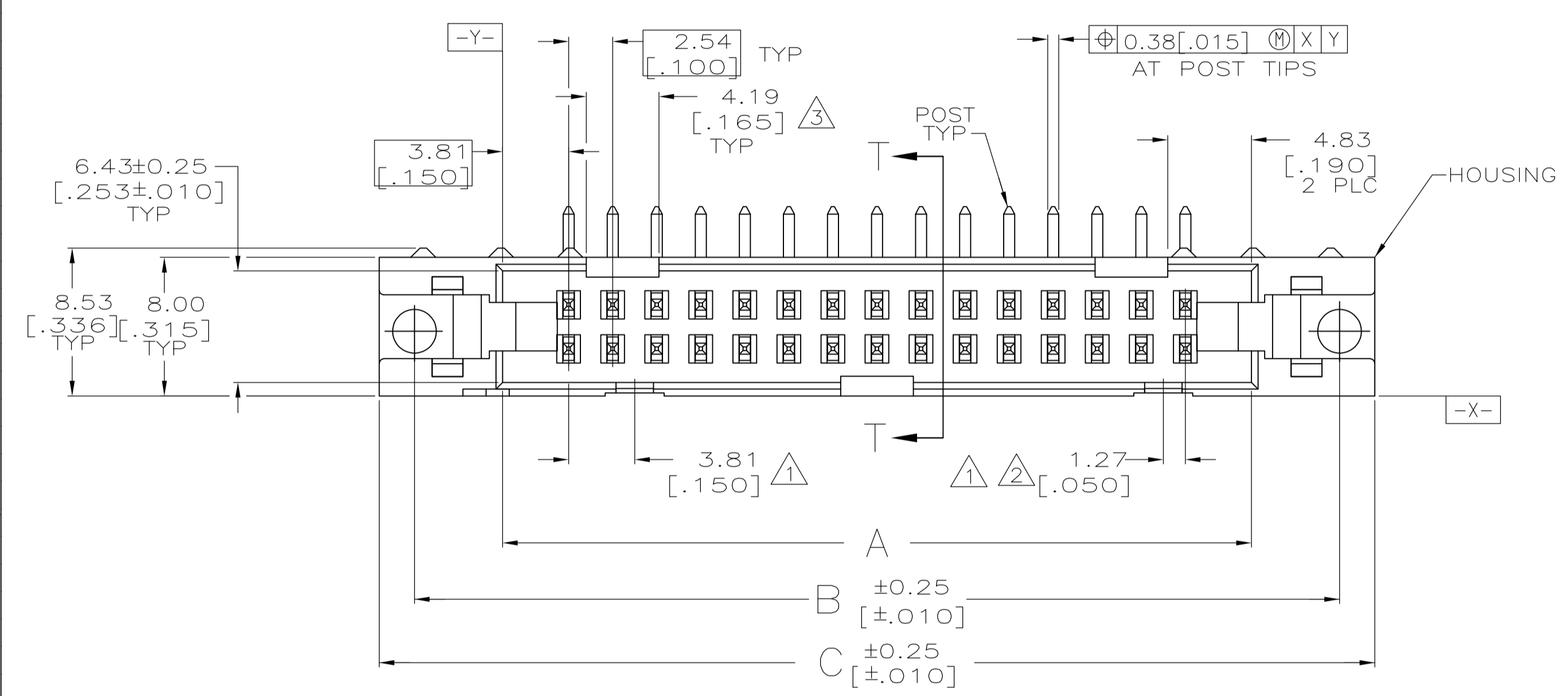


- ① COORDINATE DIMENSION APPLIES FROM BASIC LOCATION.
- ② 10 AND 14 POSITION SIZES CONTAIN ONLY ONE SLOT FOR SNAP-IN POLARIZER (MILITARY POLARIZATION) LOCATED AS SHOWN.
- ③ 10 POSITION SIZES CONTAIN ONLY ONE SLOT FOR DUAL POLARIZATION, LOCATED AS SHOWN.
- 4. RECOMMENDED PRINTED CIRCUIT BOARD THICKNESS IS 1.57 [.062].
- ⑤ DISTANCE REQUIRED BY EJECTION LATCHES IN THE OPEN POSITION.
- ⑥ POSTS: GOLD FLASH OVER PALLADIUM-NICKEL PLATE, 0.76μm[.000030] MIN TOTAL ON THE LOCALIZED PLATE AREA, 2.54μm[.000100] MIN TIN-LEAD PLATE ON THE SOLDER TAIL, 1.27μm[.000050] MIN NICKEL UNDERPLATE ON THE ENTIRE POST.  
 -OR-  
 0.76μm[.000030] MIN GOLD PLATE ON THE LOCALIZED PLATE AREA, 2.54μm[.000100] MIN TIN-LEAD PLATE ON THE SOLDER TAIL, 1.27μm[.000050] MIN NICKEL UNDERPLATE ON THE ENTIRE POST.

EJECTION LATCHES OMITTED IN THIS VIEW FOR CLARITY



OBSOLETE	53.34	65.02	65.02	75.18	71.12	60.96	44	1-499345-3
OBSOLETE	78.74	90.42	90.42	100.58	96.52	86.36	64	1-499345-2
OBSOLETE	73.66	85.34	85.34	95.50	91.44	81.28	60	1-499345-1
	60.96	72.64	72.64	82.80	78.74	68.58	50	1-499345-0
	2.400	2.860	2.860	3.260	3.100	2.700	40	499345-9
OBSOLETE	40.64	52.32	52.32	62.48	58.42	48.26	34	499345-8
OBSOLETE	35.56	47.24	47.24	57.40	53.34	43.18	30	499345-7
OBSOLETE	30.48	42.16	42.16	52.32	48.26	38.10	26	499345-6
	27.94	39.62	39.62	49.78	45.72	35.56	24	499345-5
	1.100	1.560	1.560	1.960	1.800	1.400	20	499345-4
OBSOLETE	22.86	34.54	34.54	44.70	40.64	30.48	16	499345-3
	17.78	29.46	29.46	39.62	35.56	25.40	14	499345-2
	15.24	26.92	26.92	37.08	33.02	22.86	10	499345-1
	10.16	21.84	21.84	32.00	27.94	17.78		
	[.400]	[.860]	[.860]	[1.260]	[1.100]	[.700]		
	F	E	D	C	B	A	NO OF POSN	PART NUMBER

THIS DRAWING IS A CONTROLLED DOCUMENT.

DIMENSIONS: mm [INCHES]	TOLERANCES UNLESS OTHERWISE SPECIFIED:	DIN H. MOLL 4-23-90	Tyco Electronics Tyco Electronics Corporation Harrisburg, PA 17105-3608
0 PLC ± -	1 PLC ± -	11-28-90	
2 PLC ± -	3 PLC ± 0.13[.005]	11-29-90	
4 PLC ± -	ANGLES ± -	NAME	HEADER ASSY, UNIVERSAL, AMP-LATCH
MATERIAL: HOUSING & LATCHES: GLASS FILLED NYLON OR POLYESTER, 94V-0 RATED. POSTS: BRASS	FINISH: ⑥	APVD: S. GOOD	PRODUCT SPEC: 108-40018
		APPLICATION SPEC: -	SIZE: A1
		WEIGHT: -	CAGE CODE: 00779
		CUSTOMER DRAWING	DRAWING NO: 499345
		SCALE: 4:1	SHEET 1 OF 1